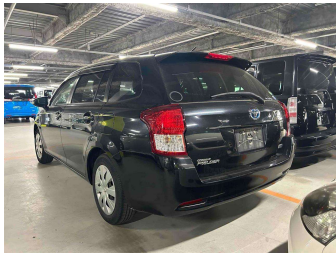
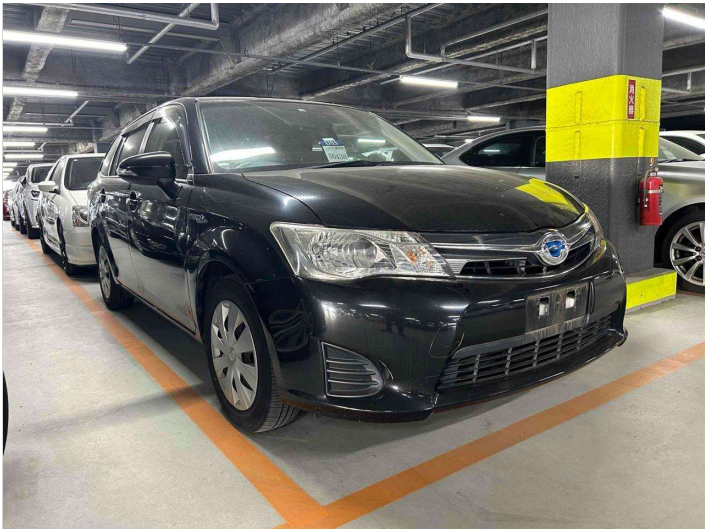


2013 Toyota Corolla FIELDER HYBRID G



FINANCE THIS CAR FROM
\$66.11 PER WEEK*

* Finance calculation based on a 60 month term, 10% deposit and with an average annual fixed interest rate of 13.95%. Actual interest rate may be higher or lower. Includes an establishment fee of \$495.00. Full terms and conditions available at [hvs.co.nz](#). Finance only, not an offer of finance. Terms, conditions and lending criteria apply.



Purchase Price

\$12,750

Includes GST
Excludes on-road costs of \$395

Indicative repayments

\$66.11 per week*

Based on a 60 month term & 10% deposit.
Total repayments (260) = **\$18,502.91**

Gain peace of mind with
Mechanical Breakdown
Insurance. **Ask us how.**

Top features

» ABS Braking

» Stereo

» Air Bag - Dual front

» Air Conditioning

» Chain Drive Motor

» Electric Mirrors

» Electronic stability c...

» Rear Wiper

» Reverse Camera

» Spoiler

Body Style	Reg No.
5 door, Hatchback	-
Odometer	Ext Colour
84,000 km	Black
Engine	History
1500 cc	-
Fuel Type	Seats
Hybrid	5 seats, Cloth
Transmission	CO2 Emissions
AT, Front Wheel	-
Wheels	Energy Economy
-	-
VIN	
-	
Interior	
Black, Cloth	
Safety	
-	

Stock ID: 1643287

HVS Dunedin | Phone 0800 487 682 | Email sales@hvsmotors.com
250 Kaikorai Valley Rd, Bradford, Dunedin 9011, New Zealand
www.hvsmotors.co.nz

★★★★★

4.59 | 2081 reviews

* HVS Dunedin is not a lender nor a financial adviser. Any amounts displayed should not be seen as an offer of finance or taken as financial advice. The interest rate, fees and loan term used in this calculation may not actually represent those available from lenders. Actual interest rates, fees and loan terms will vary per lender and are typically based on an assessment of your credit risk and responsible lending criteria. Any repayment amounts displayed are indicative only and have been calculated using several other indicative inputs. The interest rate used in this calculation is an arbitrary 13.95%, however exact interest rates vary per lender. The term of the loan used in this calculation is 60 months. Exact terms available vary per lender although options typically include 6, 12, 18, 24, 36, 48 and 60 months. This calculation also includes a typical mandatory fee charged by lenders. This is a one-off establishment fee of \$495.00. Typically, this fee can be paid upfront or, as in this calculation, be capitalised over the contract term, ie. included in the loan amount. This fee can vary per lender and other non-mandatory fees and charges may also apply. The total amount of repayments has been calculated by multiplying 260 weekly repayments (based on a 60 month term) by the weekly repayment amount of \$66.11 which equals \$18,502.91. This calculator does not consider any of your own personal circumstances and we strongly suggest you seek budgeting advice prior to committing to any loan contract. Responsible lending criteria and lender terms and conditions will likely apply to any finalised loan contract. Proof of security and/or vehicle insurance may also be required before proceeding.